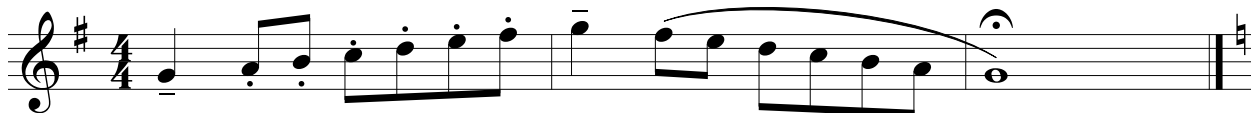


TCU High School Band Camp Auditions

Set 3

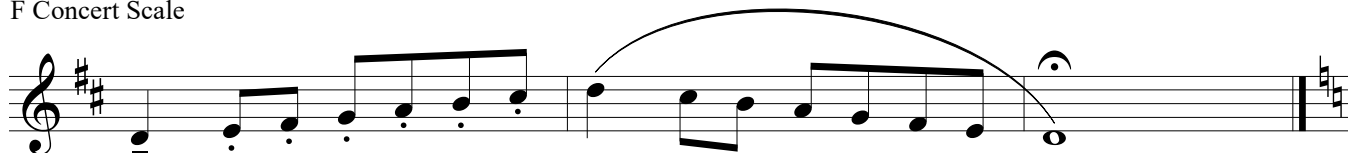
Bb Concert Scale



Eb Concert Scale



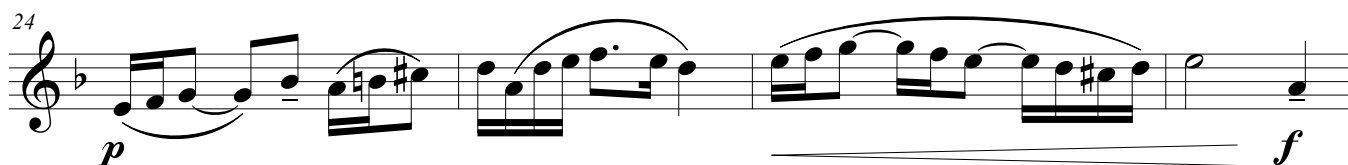
F Concert Scale



C Chromatic Scale



Larghetto espressivo ♩ - 60



32 *mf* *rit.* *p*

Moderato ♩ = 75 - 85

36 *f*

40 *mp*

44 *f* *p*

48 *mf* *f*

Detailed description of the musical score: The score is written for a single staff in treble clef. It begins at measure 32 with a mezzo-forte (*mf*) dynamic. The first measure contains a triplet of eighth notes. A slur covers measures 33-35, with a 'rit.' (ritardando) marking above it. The piece ends at measure 48 with a forte (*f*) dynamic. A tempo marking 'Moderato' with a quarter note equal to 75-85 beats per minute is placed between measures 32 and 36. Dynamics include *mf*, *f*, *mp*, *p*, and *f* again at the end. Articulations include accents, slurs, and a triplet.